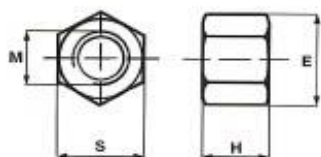


# S330 UNI 5587

## Turned short nuts

Material: steel class 10K.



Codice Code	M	S	E	H	gr
S330.08008	8	13	14,8	8	6
S330.10010	10	17	19,6	10	15
S330.12012	12	19	21,5	12	20
S330.14014	14	22	25	14	30
S330.16016	16	24	27,5	16	40
S330.18018	18	27	31	18	60
S330.20020	20	30	34,6	20	80
S330.22022	22	32	36,9	22	95
S330.24024	24	36	41,6	24	135
S330.27027	27	41	47,3	27	195
S330.30030	30	46	53,1	30	275
S330.36036	36	55	63,5	36	465
S330.42042	42	65	75	42	790
S330.48048	48	75	86,5	48	1200

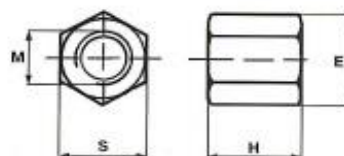
# S340 DIN 6330B

## Dadi alti torniti

Materiale: acciaio classe 10K.

## Turned tall nuts

Material: steel class 10K.



6.018.084

6.018.211  
6.018.085  
6.018.210  
6.018.087  
6.018.088  
6.018.089  
6.018.090  
6.018.212  
6.018.208  
6.018.091  
6.018.092  
6.018.214  
6.018.093  
6.018.215  
6.018.216

Codice Code	M	S	E	H	gr
S340.06009	6	10	11,5	9	5
S340.08012	8	13	14,8	12	9
S340.10015	10	17	19,6	15	20
S340.12018	12	19	21,5	18	28
S340.14021	14	22	25	21	45
S340.16024	16	24	27,5	24	58
S340.18027	18	27	31	27	83
S340.20030	20	30	34,6	30	110
S340.22033	22	32	36,9	33	130
S340.24036	24	36	41,6	36	195
S340.27041	27	41	47,3	40	280
S340.30045	30	46	53,1	45	405
S340.36054	36	55	63,5	54	715
S340.42063	42	65	75	63	1170
S340.48072	48	75	86,5	72	1800

## Tasselli per cave a "T"

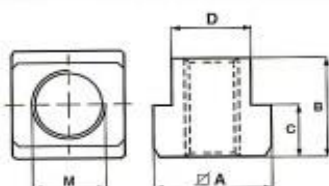
Materiale: acciaio classe 8G.

# S360

DIN 508 - UNI 5531

## Nuts for T-slots

Material: steel class 8G.



Codice Code	M	D	A	B	C		gr	
S360.06008	6	5,7	13	10	6	8	9	6.065.007
S360.08010	8	9,7	15	12	6	10	12	6.065.008
S360.08012	8	11,7	18	14	7	12	22	6.065.009
S360.10012	10						20	6.065.010
S360.08014	8						41	6.065.011
S360.10014	10	13,7	22	16	8	14	37	6.065.012
S360.12014	12						35	6.065.013
S360.08016	8						61	6.065.014
S360.10016	10	15,7	25	18	9	16	59	6.065.016
S360.12016	12						56	6.065.017
S360.14016	14						52	6.065.018
S360.08018	8						91	6.065.019
S360.10018	10						87	6.065.020
S360.12018	12	17,7	28	20	10	18	82	6.065.021
S360.14018	14						70	6.065.022
S360.16018	16						60	6.065.023

Codice Code	M	D	A	B	C		gr	
S360.16020	16	19,7	32	24	12	20	110	6.065.024
S360.18020	18						100	6.065.025
S360.16022	16						176	6.065.026
S360.18022	18	21,7	35	28	14	22	163	6.065.027
S360.20022	20						155	6.065.028
S360.16024	16						260	6.065.029
S360.20024	20	23,7	40	32	16	24	235	6.065.030
S360.22024	22						220	6.065.031
S360.16028	16						383	6.065.032
S360.20028	20	27,7	44	35	18	28	355	6.065.033
S360.22028	22						340	6.065.034
S360.24028	24						322	6.065.035
S360.24030	24	29,7	48	38	19	30	440	6.065.036
S360.27032	27	31,6	50	40	20	32	460	6.065.037
S360.30036	30	35,6	54	44	22	36	590	6.065.039
S360.36042	36	41,6	65	52	26	42	1010	6.065.041

# S362 No. 508 L

## Extended nuts for T-slots

Material: steel class 8G.



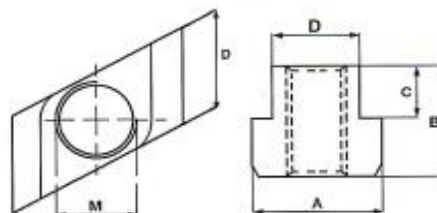
6.018.269

Codice Code	M	D	L	A	B	C		gr
S362.06008	6	7,7	26	13	10	5	8	14
S362.08010	8	9,7	30	15	12	6	10	30
S362.10012	10	11,7	36	18	14	7	12	49
S362.12014	12	13,7	44	22	16	8	14	82
S362.14016	14	15,7	50	25	18	9	16	120
S362.16018	16	17,7	56	28	20	10	18	170
S362.18020	18	19,7	64	32	24	12	20	260
S362.20022	20	21,7	70	35	28	14	22	360
S362.22024	22	23,7	80	40	32	16	24	535
S362.24028	24	27,7	88	44	36	18	28	730
S362.27032	27	31,6	100	50	40	20	32	1090
S362.30036	30	35,6	108	54	44	22	36	1390

# S363 No. 510

## Nuts for T-slots "Rhombus"

Material: steel class 8G.



Codice Code	M	D	A	B	C		gr	
6.065.045	S363.10012	10	11,7	18	14	7	12	14
6.065.046	S363.10014	10	13,7	22	16	8	14	27
6.065.047	S363.12014	12	13,7	22	16	8	14	22
6.065.048	S363.14016	14	15,7	25	18	9	16	33
6.065.049	S363.10018	10	17,7	28	20	10	18	64
6.065.050	S363.16018	16	17,7	28	20	10	18	46
6.065.051	S363.16020	16	19,7	32	24	12	20	79
6.065.052	S363.18020	18	19,7	32	24	12	20	70
6.065.053	S363.16022	16	21,7	35	28	14	22	119
6.065.054	S363.20022	20	21,7	35	28	14	22	98
6.065.056	S363.16028	16	27,7	44	36	18	28	278
6.065.058	S363.24028	24	27,7	44	36	18	28	215
6.065.059	S363.30036	30	35,6	54	44	22	36	430



# S370

## Flat washers

Material: steel class 8.8.



# S380

## Thick washers

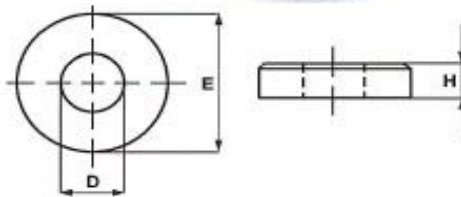
Material: steel class 8.8.



# S390

## Broad washers

Material: steel class 8.8.



Codice Code	D	E	H	gr
S370.00006	6,4	13	3,5	3
S370.00008	8,4	18	4	6
S370.00010	10,5	22	4	9
S370.00012	13	28	5	20
S370.00014	15	35	6	35
S370.00016	17	35	6	35
S370.00018	19	40	6	45
S370.00020	21	40	6	45
S370.00022	23	45	8	75
S370.00024	25	45	8	70
S370.00027	28	50	10	105
S370.00030	31	50	10	95
S370.00036	37	60	12	160
S370.00042	43	70	12	225
S370.00048	49	90	12	415

6.018.103

6.018.104

6.018.105

6.018.106

Codice Code	D	E	H	gr
S380.00006	6,4	20	8	17
S380.00008	8,4	35	8	55
S380.00010	10,5	35	8	55
S380.00012	13	40	8	70
S380.00014	15	40	10	85
S380.00016	17	45	10	105
S380.00018	19	45	10	100
S380.00020	21	50	12	150
S380.00022	23	50	12	140
S380.00024	25	50	12	140
S380.00027	28	50	14	145
S380.00030	31	50	14	135

6.018.167

6.018.107

6.018.108

6.018.168

Codice Code	D	E	H	gr
S390.00006	6,4	17	3,5	5
S390.00008	8,4	23	4	10
S390.00010	10,5	28	4	16
S390.00012	13	35	5	35
S390.00014	15	40	5	40
S390.00016	17	45	6	70
S390.00018	19	45	6	60
S390.00020	21	50	6	73
S390.00022	23	50	8	92
S390.00024	25	60	8	170
S390.00027	28	68	10	240
S390.00030	31	68	10	230
S390.00036	38	80	12	350
S390.00042	44	100	15	670
S390.00048	50	100	17	920

N.B. : Si eseguono su richiesta misure non a catalogo

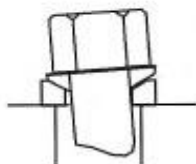
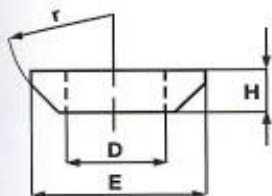
N.B. : Other sizes can be supplied on request

# S375.C

DIN 6319C

## Spherical seat washers

Material: steel class 8.8.

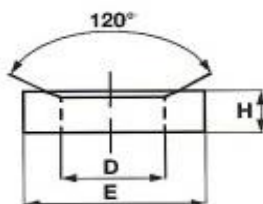


# S375.D

DIN 6319D

## Dished washers

Material: steel class 8.8.

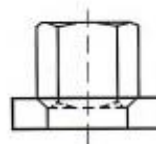
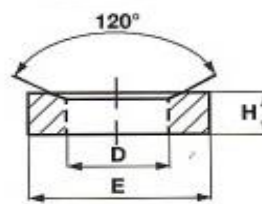


# S375.G

DIN 6319G

## Dished washers

Material: steel class 8.8.



6.018.138  
6.018.129  
6.018.130  
6.018.131  
6.018.132  
6.018.133  
6.018.134  
6.018.135  
6.018.136  
6.018.137  
6.018.139  
6.018.140

Codice Code	D	E	H	gr
<b>S375.D0006</b>	7,1	12	2,8	1,5
<b>S375.D0008</b>	9,6	17	3,5	4
<b>S375.D0010</b>	12	21	4,2	6,5
<b>S375.D0012</b>	14,2	24	5	10
<b>S375.D0014</b>	16,5	28	5,6	18
<b>S375.D0016</b>	19	30	6,2	19
<b>S375.D0020</b>	23,2	36	7,5	32
<b>S375.D0024</b>	28	44	9,5	63
<b>S375.D0030</b>	35	56	12	133
<b>S375.D0036</b>	42	68	15	236
<b>S375.D0042</b>	49	78	18	365
<b>S375.D0048</b>	56	92	22	641

6.018.006  
6.018.150  
6.018.151  
6.018.111  
6.018.112  
6.018.113  
6.018.114  
6.018.152  
6.018.153  
6.018.154  
6.018.155  
6.018.001

Codice Code	D	E	r	H	gr
<b>S375.C0006</b>	6,4	12	9	2,3	1
<b>S375.C0008</b>	8,4	17	12	3,2	2,5
<b>S375.C0010</b>	10,5	21	15	4	5
<b>S375.C0012</b>	13	24	17	4,6	7
<b>S375.C0014</b>	15	28	22	5	10
<b>S375.C0016</b>	17	30	22	5,3	12
<b>S375.C0020</b>	21	36	27	6,3	23
<b>S375.C0024</b>	25	44	32	8,2	42
<b>S375.C0030</b>	31	56	41	11,2	87
<b>S375.C0036</b>	37	68	50	14	184
<b>S375.C0042</b>	43	78	58	17	297
<b>S375.C0048</b>	50	92	67	21	525

N.B. : Si eseguono su richiesta misure non a catalogo

6.018.147  
6.018.141  
6.018.142  
6.018.115  
6.018.143  
6.018.116  
6.018.117  
6.018.144  
6.018.145  
6.018.146  
6.018.148  
6.018.149

Codice Code	D	E	H	gr
<b>S375.G0006</b>	7,1	17	4	5,5
<b>S375.G0008</b>	9,6	23	4	13
<b>S375.G0010</b>	12	28	5	19
<b>S375.G0012</b>	14,2	35	5	32
<b>S375.G0014</b>	16,5	40	5	48
<b>S375.G0016</b>	19	45	6	56
<b>S375.G0020</b>	23,2	50	8	94
<b>S375.G0024</b>	28	60	10	169
<b>S375.G0030</b>	35	68	10	218
<b>S375.G0036</b>	42	80	12	350
<b>S375.G0042</b>	49	100	15	640
<b>S375.G0048</b>	56	110	17	830

N.B. : Other sizes can be supplied on request