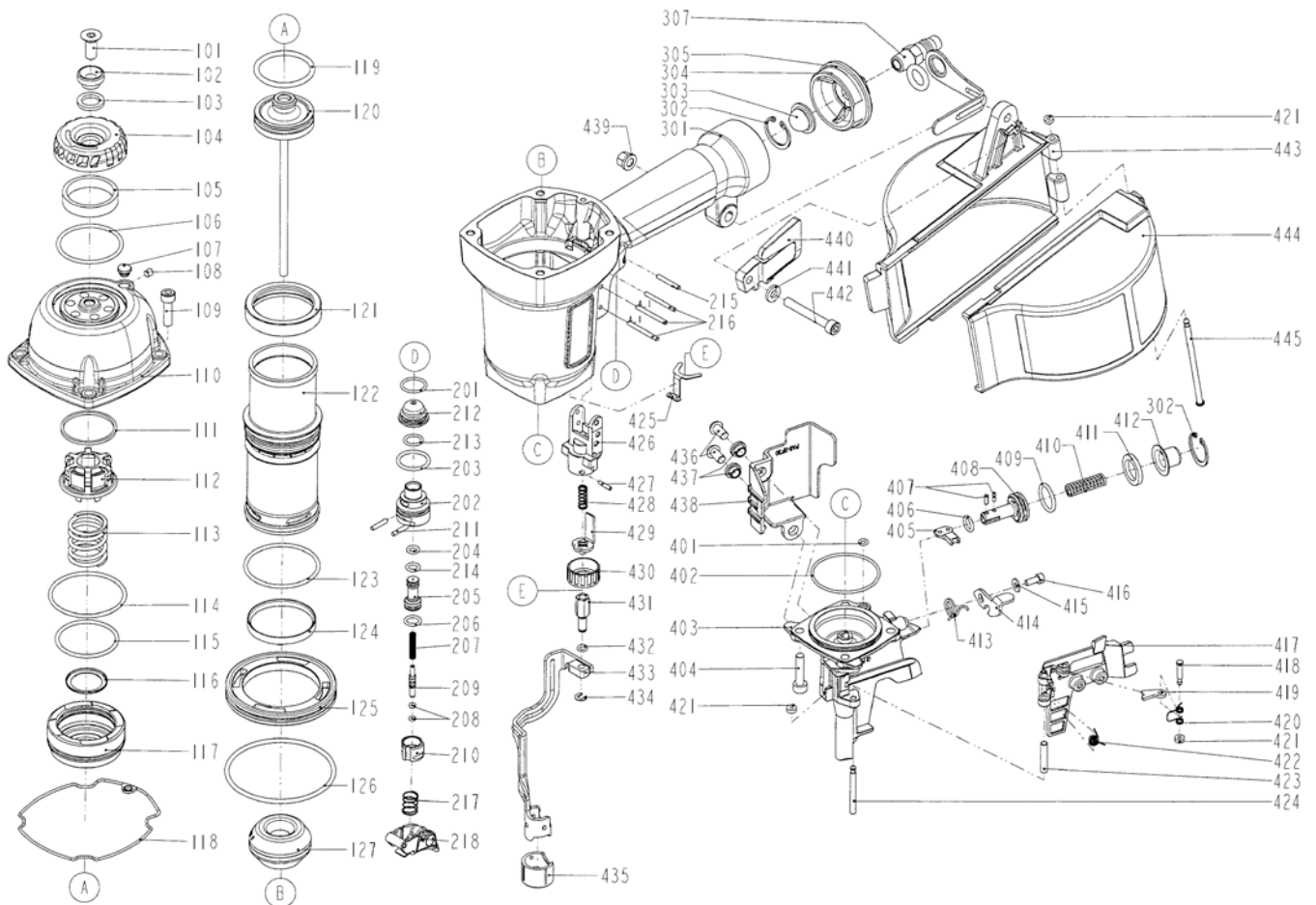


DIAGRAM OF BEX C28/65-F1



ITEM NO.	PART NO.	DESCRIPTION	ITEM NO.	PART NO.	DESCRIPTION	ITEM NO.	PART NO.	DESCRIPTION
101	3034010200	COUNTER SUNK SCREW	207	102520801	SPRING	416	2040101-02040-2	HEX.SOC.HD.BOLT
102	11381-0954702-1	WASHER	208	2041108-01020-0	O - RING	417	11361-1164702-1	DOOR
103	1135G-0464702-1	RUBBER PAD	209	11375-1080001-2	PLUNGER	418	11359-1164701-1	PIN-NAIL STOP
104	11371-0954701-1	DEFLECTOR	210	11373-0864701-1	TRIGGER VALVE HEAD	419	11358-1164701-1	NAIL STOP
105	1132T-0780001-1	MUFFLER	211	11329-0860001-1	PIN	420	1133C-1160001-1	STOPPER FINGER SPRING
106	2041102-05050-0	O - RING	212	1137A-0860001-1	COVER-PLUNGER	421	1135H-0860001-1	PU RETAINER
107	103510401	GROMMET	213	2041104-02070-0	O - RING	422	1138J-1160001-1	SPRING
108	20810505C12	HEX.SOC.HD.SCREW	214	2152018	O - RING	423	11398-1164701-1	LATCH SPRING BUSHING
109	2040101-04091-0	HEX.SOC.HD.BOLT	215	246332	SPRING PIN	424	11362-1164702-1	DOOR SHAFT PIN
110	11369-1164302-1	CAP	216	3304300000	SPRING PIN	425	1133L-1164701-1	STOPPER
111	11381-0950001-1	WASHER SEAL	217	11376-0370001-1	SPRING	426	11338-0764701-1	SAFETY GUIDE
112	11370-1160002-1	SEAL	218	11224-0764701-1	TRIGGER UNIT	427	246162	SPRING PIN
113	11360-1010001-1	COMPRESSION SPRING	301	11230-1167101-1	GUN BODY UNIT	428	100844101	SAFETY SPRING
114	2041104-06050-0	O - RING	302	227203	C - RING	429	11256-0764702-2	SAFETY B UNIT
115	2041109-05100-0	O - RING	303	1137N-0370002-1	FILTER	430	11393-0761101-1	ADJUST AXIE
116	11381-0950002-1	WASHER	304	11346-1164302-1	END CAP	431	11393-1164701-1	ADJUST ROD
117	11368-1160002-1	HD.VALVE PISTON	305	2152117	O - RING	432	3200260000	O - RING
118	11302-1164701-1	CYLINDER CAP SEAL	307	1135V-0000039-1	AIR PLUG	433	11254-1164702-1	SAFETY A UNIT
119	2041100-04031-0	O - RING	401	2041108-01010-0	O - RING	434	226110	E - RING
120	11204-1160006-1	DRIVER UNIT	402	2041109-05110-0	O - RING	435	11339-0764702-1	PROTECTIVE CASING
121	11399-0954701-1	COLLAR	403	11382-1164703-1	NOSE PIECE	436	2040102-04010-2	HALF ROUND HD.HEX.BOLT
122	11320-1160002-1	CYLINDER	404	2040101-04200-2	HEX.SOC.HD.BOLT	437	1136L-1374701-1	PROTECTIVE INSERT
123	2041104-06060-0	O - RING	405	11306-1164702-1	FEED FINGER	438	1137A-1164702-1	SAFETY COVER
124	11322-0954701-1	CYLINDER RING	406	2041108-01150-0	O - RING	439	3413030000	BOLT CAP
125	11321-0950001-1	CYLINDER SPACER	407	246062	SPRING PIN	440	1133D-1084701-1	SPRING RETAINER
126	2041101-08020-0	O - RING	408	11364-1164702-1	FEED PISTON	441	2121063-1	FLAT WASHER
127	11327-0954701-1	BUMPER	409	2152049	O - RING	442	2040101-04101-0	HEX.SOC.HD.BOLT
201	2041104-02060-0	O - RING	410	11367-1160002-1	PUSHER SPRING	443	11354-1164702-1	MAGAZINE CASE
202	11374-0860001-1	PLUNGER CAP	411	1134W-0810001-1	FEED BUMPER	444	11355-1164701-1	MAGAZINE COVER
203	2152061	O - RING	412	11366-1164702-1	FEED PISTON CAP	445	1136R-1164701-1	MAGAZINE SHAFT PIN
204	2152058	O - RING	413	11311-1160002-1	LATCH SPRING			
205	1133S-0860001-1	VALVE PLUNGER	414	11310-1164702-1	DOOR LATCH			
206	2152016	O - RING	415	2123102	FLAT WASHER			