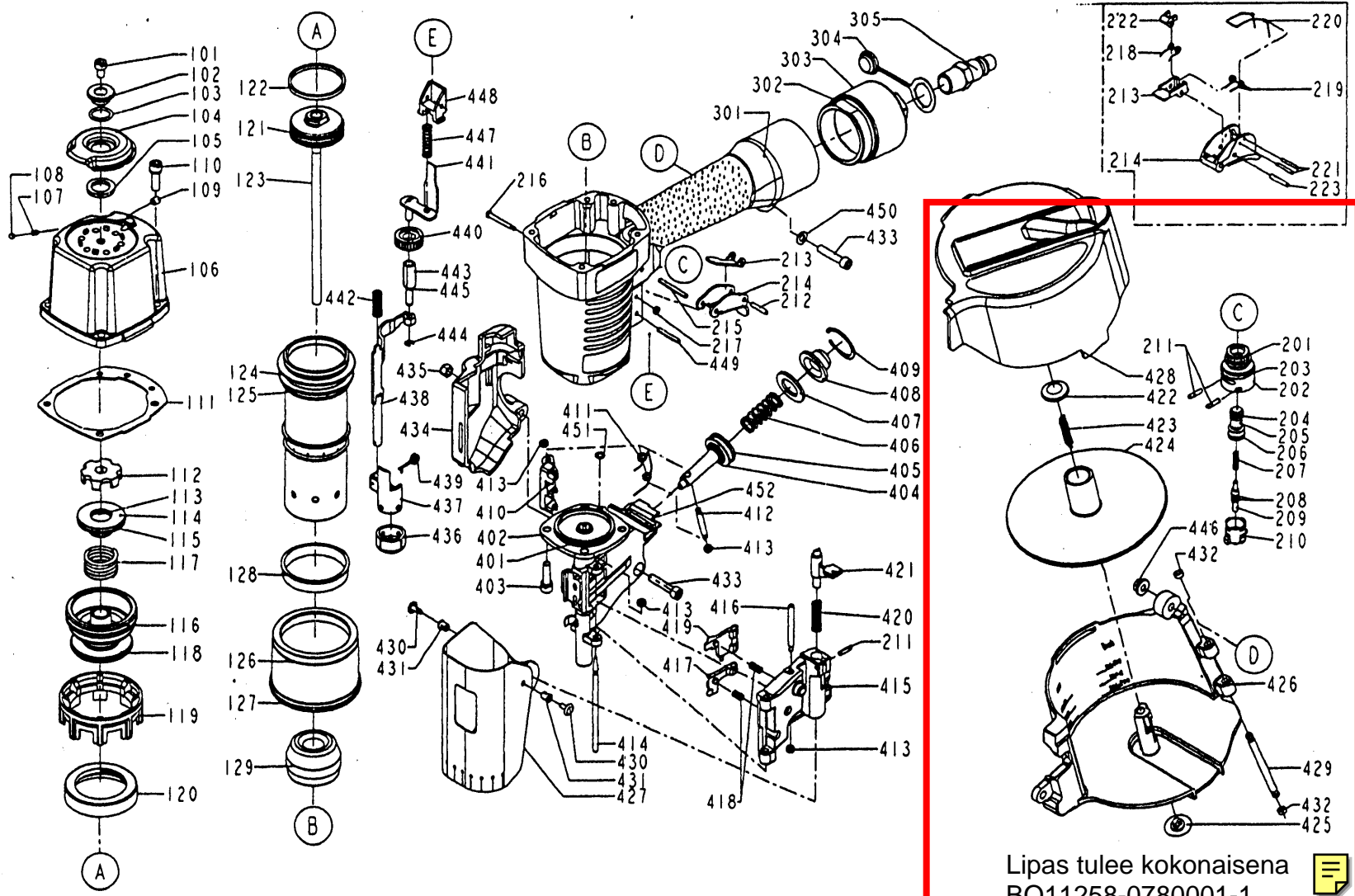



DIAGRAM OF MODEL NO. BEX C25/60-A1



Lipas tulee kokonaisena
BO11258-0780001-1 

PARTS LIST FOR BEX C25/60-A1

ITEM NO.	PART NO.	DESCRIPTION	ITEM NO.	PART NO.	DESCRIPTION	ITEM NO.	PART NO.	DESCRIPTION
101	3002040200	HEX.SOC.HD.BOLT	207	102520801	SPRING	420	2018680A00	LATCH SPRING
102	104611401	WASHER	208	2152060	O - RING	421	2021620D00	DOOR LATCH
103	2152002	O - RING	209	100820301	PLUNGER	422	102547102	SPRING BASE A
104	100810401	DEFLECTOR	210	100820201	TRIGGER VALVE HEAD	423	2027230A00	PULL SPRING
105	104611701	RUBBER PAD	211	246202	SPRING PIN	424	2022690047	SPACER
106	11369-0784302-1	CAP	212	246072	SPRING PIN	425	102546302	SPRING BASE
106	11369-0780002-1	CAP	213	102521301	SECONDARY TRIGGER	426	11354-0784701-1	MAGAZINE CASE
107	104611801	POSITIONING SPRING	214	102521401	TRIGGER	427	2022770000	MUZZLE PROTECTOR
108	2161041	BALL	215	2040400-05150-0	SPRING PIN	428	2022670047	MAGAZINE COVER
109	20810505C12	HEX.SOC.HD.SCREW	216	100820401	TRIGGER PIVOT PIN	429	104743401	MAGAZINE SHAFT PIN
110	201105181A	BOLT ASSY	217	104620201	URETHANE RETAINER	430	2020690047	FIXED PIN
111	11302-0080001-2	CYLINDER CAP SEAL	301	11230-0784201-1	GUN BODY UNIT	431	2020700047	FIXED RING
112	2023560000	SEAL	302	2152117	O - RING	432	104740601	SHAFT RING
113	3201270000	O - RING	303	11346-0784301-1	END CAP	433	20110525C22	HEX.SOC.HD.BOLT
114	2023670000	COLLOR	304	2027810047	DUSTY COVER	434	1134C-0784701-2	SAFETY COVER
115	2152087	O - RING	305	2303021	AIR PLUG	435	2501052	LOCK NUT
116	2152054	O - RING	401	2152001	O - RING	436	11339-0784701-2	PROTECTIVE CASING
117	11360-0780001-1	COMPRESSION SPRING	402	11382-0784701-1	NOSE PIECE	437	2022760A00	SAFETY A
118	2021290000	HD.VALVE PISTON	403	3002190200	BOLT ASSY	438	11257-0784702-1	SAFETY UNIT
119	2022700000	CYLINDER PRESS RING	404	2027390A00	FEED PISTON	439	102547001	SAFETY FOOT SPRING
120	2022780000	COLLAR	405	2152085	O - RING	440	2027320100	ADJUST AXIE
122	2041104-04080-0	O - RING	406	11367-0784701-1	PUSHER SPRING	441	11332-0784701-2	SAFETY B
123	11204-0780005-1	DRIVER UNIT	407	1134W-0780001-1	FEED BUMPER	442	11337-0784701-1	SAFETY SPRING
124	11320-0780001-1	CYLINDER	408	11366-0764701-2	FEED PISTON CAP	443	2027330A00	ADJUST ROD
125	2152112	O - RING	409	2040300-02010-1	C - RING	444	226106	E - RING
126	2022600000	CYLINDER SPACER	410	2022630A00	FEED FINGER	445	2152008	O - RING
127	2152116	O - RING	411	11307-0780001-1	FEED FINGER SPRING	446	2040501-03040-0	BOLT CAP
128	11322-0784701-1	CYLINDER RING	412	106640201	PIN FEED PISTON	447	100844101	SAFETY SPRING
129	100812401	BUMPER	413	2021610000	PU RETAINER	448	100842502	SAFETY GUIDE
201	2152118	O - RING	414	2022750A00	DOOR SHAFT PIN	449	246332	SPRING PIN
202	100820601	PLUNGER CAP	415	2022640D00	DOOR	450	2123052	FLAT WASHER
203	3201250000	O - RING	416	11359-0784701-1	PIN-NAIL STOP	451	2041109-01060-0	O - RING
204	2152058	O - RING	417	2022730A00	SECOND STOPPER FINGE	452	2041109-01050-0	O - RING
205	102520601	VALVE PLUNGER	418	1133C-0784701-1	STOPPER FINGER SPRING			
206	2152016	O - RING	419	2022720A00	FIRST STOPPER FINGER			

2002/7/19