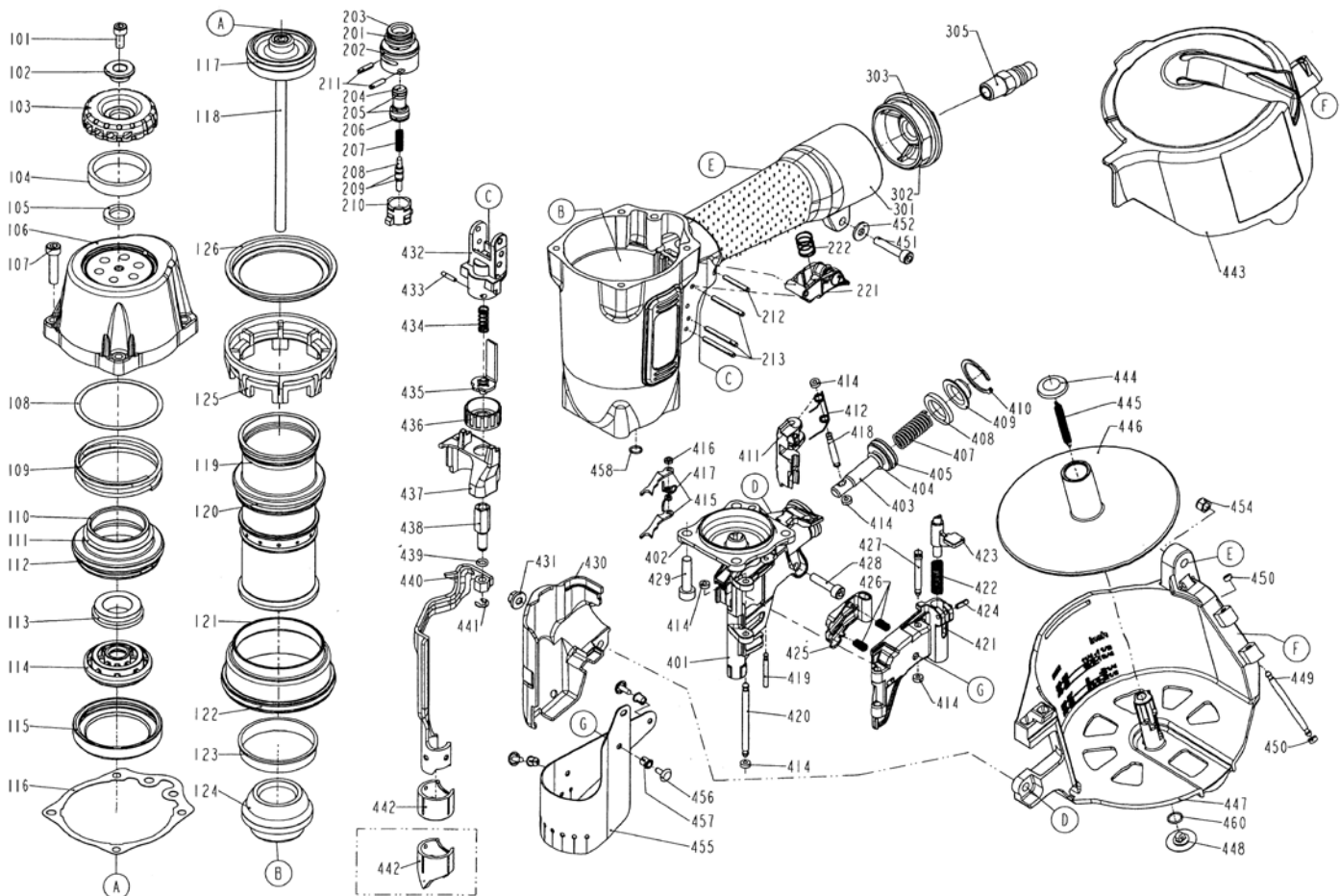


DIAGRAM OF BEX C28/65-A1



ITEM NO.	PART NO.	DESCRIPTION	ITEM NO.	PART NO.	DESCRIPTION	ITEM NO.	PART NO.	DESCRIPTION
101	2040101-03070-2	HEX.SOC.HD.BOLT	209	2152060	O - RING	426	1133C-0784701-1	STOPPER FINGER SPRING
102	104611401	WASHER	210	100820201	TRIGGER VALVE HEAD	427	11359-0764702-1	PIN-NAIL STOP
103	11371-0784701-2	DEFLECTOR	211	246202	SPRING PIN	428	20110522C12	HEX.SOC.HD.BOLT
104	1132T-0780001-1	MUFFLER	212	246332	SPRING PIN	429	2040101-04200-2	HEX.SOC.HD.BOLT
105	104611701	RUBBER PAD	213	3304300000	SPRING PIN	430	1134C-0764703-1	SAFETY COVER
106	11369-0764304-4	CAP	221	11224-0764701-1	TRIGGER UNIT	431	2040501-03040-0	BOLT CAP
107	2040100-03130-0	BOLT W/FLAT WASHER	222	11376-0370001-1	SPRING	432	11338-0764701-1	SAFETY GUIDE
108	11381-0760001-1	WASHER	301	11230-0767101-2	GUN BODY UNIT	433	246162	SPRING PIN
109	11360-0760002-1	COMPRESSION SPRING	302	100830305-43	END CAP	434	100844101	SAFETY SPRING
110	11368-0760002-1	HD.VALVE PISTON	303	2152117	O - RING	435	11332-0794705-1	SAFETY B
111	2041104-05050-0	O - RING	305	1135V-0000039-1	AIR PLUG	436	11393-0761101-1	ADJUST AXIE
112	2041101-06020-0	O - RING	401	11382-1164701-2	NOSE PIECE	437	1137A-0764701-1	COVER-SAFETY
113	1133M-0760001-1	SEAL GASKET	402	3204240000	O - RING	438	11393-0764701-1	ADJUST ROD
114	11370-0760002-1	SEAL	403	11364-0764702-1	FEED PISTON	439	3200260000	O - RING
115	11399-0760003-1	COLLAR	404	2041109-01050-0	O - RING	440	11331-0764703-1	SAFETY A
116	1132M-0764701-1	PACKING	405	2152049	O - RING	441	226110	E - RING
117	2041104-04102-0	O - RING	407	105240601	SPRING A COMPRESSION	442	11339-0764702-1	PROTECTIVE CASING
118	11204-1160003-1	DRIVER UNIT	408	1134W-0810001-1	FEED BUMPER	442	11339-0764703-1	PROTECTIVE CASING
119	11320-0760003-2	CYLINDER	409	11366-0814701-1	FEED PISTON CAP	443	11355-0760001-1	MAGAZINE COVER
120	3204200000	O - RING	410	227203	C - RING	444	102547102	SPRING BASE A
121	11321-0760002-1	CYLINDER SPACER	411	11306-1014702-1	FEED FINGER	445	11328-0764701-2	PULL SPRING
122	3206110000	O - RING	412	11307-0780001-1	FEED FINGER SPRING	446	11356-0784702-1	SPACER
123	102511501	CYLINDER RING	414	2021610000	PU RETAINER	447	11354-0764702-2	MAGAZINE CASE
124	11327-0764702-1	BUMPER	415	1130G-0764701-1	FIRST STOPPER FINGER	448	102546302	SPRING BASE
125	1131E-0764701-2	CYLINDER PRESS RING	416	104620201	URETHANE RETAINER	449	11362-0784702-1	DOOR SHAFT PIN
126	1136D-0834701-1	PRESS RING	417	1130H-1000001-1	SPRING	450	102540901	SHAFT RING
201	2152118	O - RING	418	106640201	PIN FEED PISTON	451	20110525C22	HEX.SOC.HD.BOLT
202	3201250000	O - RING	419	11359-1004701-1	PIN-NAIL STOP	452	2123052	FLAT WASHER
203	100820601	PLUNGER CAP	420	11362-0764702-1	DOOR SHAFT PIN	454	2501052	LOCK NUT
204	102520601	VALVE PLUNGER	421	11361-0764702-2	DOOR	455	11383-0760002-1	MUZZLE PROTECTOR
205	2152058	O - RING	422	2018680A00	LATCH SPRING	456	2020690047	FIXED PIN
206	2152016	O - RING	423	2021620D00	DOOR LATCH	457	2020700047	FIXED RING
207	102520801	SPRING	424	246322	SPRING PIN	458	2041109-01060-0	O - RING
208	100820301	PLUNGER	425	11358-0764703-1	NAIL STOP	460	2152069	O - RING