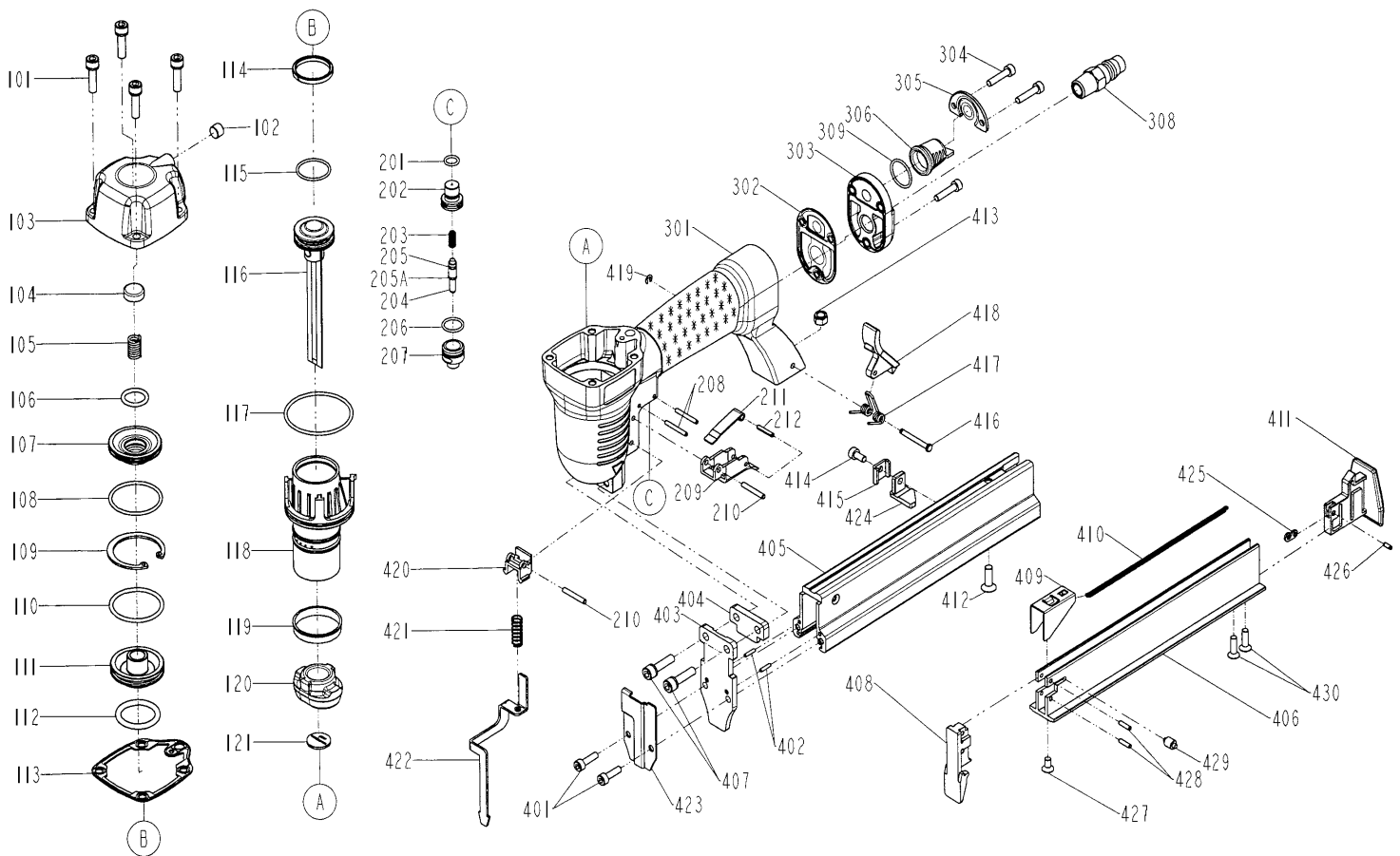


DIAGRAM OF BEX S80/30-A1



ITEM NO.	PART NO.	DESCRIPTION	ITEM NO.	PART NO.	DESCRIPTION	ITEM NO.	PART NO.	DESCRIPTION
101	201105201A	BOLT ASSY	212	246352	SPRING PIN	425	11323-0044704-1	POSITIONING SHEET
102	2040104-05010-0	HEX.SOC.HD.SCREW	301	11230-1697101-1	GUN BODY UNIT	426	2040401-04030-0	SPIRAL PINS
103	11369-0314301-2	CAP	302	1132H-0314701-1	GASKET	427	20710408C12	COUNTER SUNK SCREW
104	2001091000	SEAL	303	11346-0314301-1	END CAP	428	246162	SPRING PIN
105	11360-0010001-3	COMPRESSION SPRING	304	20110418C12	HEX.SOC.HD.BOLT	429	11379-0040002-1	ROLLER
106	2152011	O - RING	305	11323-0314701-1	BRACKET	430	3031050000	COUNTER SUNK SCREW
107	11399-0310001-1	COLLAR	306	11394-0314701-1	GUIDE PLATE			
108	3203330000	O - RING	308	1135V-0000039-1	AIR PLUG			
109	1131C-0314701-1	RING	309	2041109-02060-0	O - RING			
110	2152041	O - RING	401	20110414C12	HEX.SOC.HD.BOLT			
111	101510901	HD.VALVE PISTON	402	11329-0314701-1	PIN-A			
112	2041108-03120-0	O - RING	403	11351-1694701-1	DRIVER GUIDE COVER			
113	1132M-0314701-1	PACKING	404	11380-0314701-1	GASKET			
114	100112002	PISTON RING	405	11391-1694701-1	MAGAZINE B			
115	3202220000	O - RING	406	11389-1694701-1	MAGAZINE A			
116	11204-1690001-1	DRIVER UNIT	407	3002190200	BOLT ASSY			
117	2041105-05030-0	O - RING	408	11303-1694701-1	DRIVER GUIDE			
118	11320-0310001-1	CYLINDER	409	11363-1694701-1	PUSHER			
119	100111701	CYLINDER RING	410	2020880J00	PULL SPRING			
120	11327-0314701-3	BUMPER	411	11347-1694701-1	REAR PLATE			
121	11388-1694701-1	DRIVER GUIDE	412	20710516C12	COUNTER SUNK SCREW			
201	2152035	O - RING	413	2501052	LOCK NUT			
202	11373-0150001-3	TRIGGER VALVE HEAD	414	20110408C12	HEX.SOC.HD.BOLT			
203	100122001	SPRING	415	11305-0654701-1	STOPPER			
204	101520301	PLUNGER	416	2021640A00	LATCH PIN			
205	2152060	O - RING	417	2020770A00	SPRING			
205A	2041102-01031-0	O - RING	418	11343-0314702-2	LATCH			
206	3201260000	O - RING	419	226105	E - RING			
207	101520601	PLUNGER CAP	420	101543201	SAFETY GUIDE			
208	2040400-04100-0	SPRING PIN	421	100720201	SAFETY SPRING			
209	101520801	TRIGGER	422	11330-1694701-1	SAFETY			
210	246212	SPRING PIN	423	11334-1694701-1	RELIEF PLATE			
211	101521501	SECONDARY TRIGGER	424	11305-0031101-1	STOPPER			