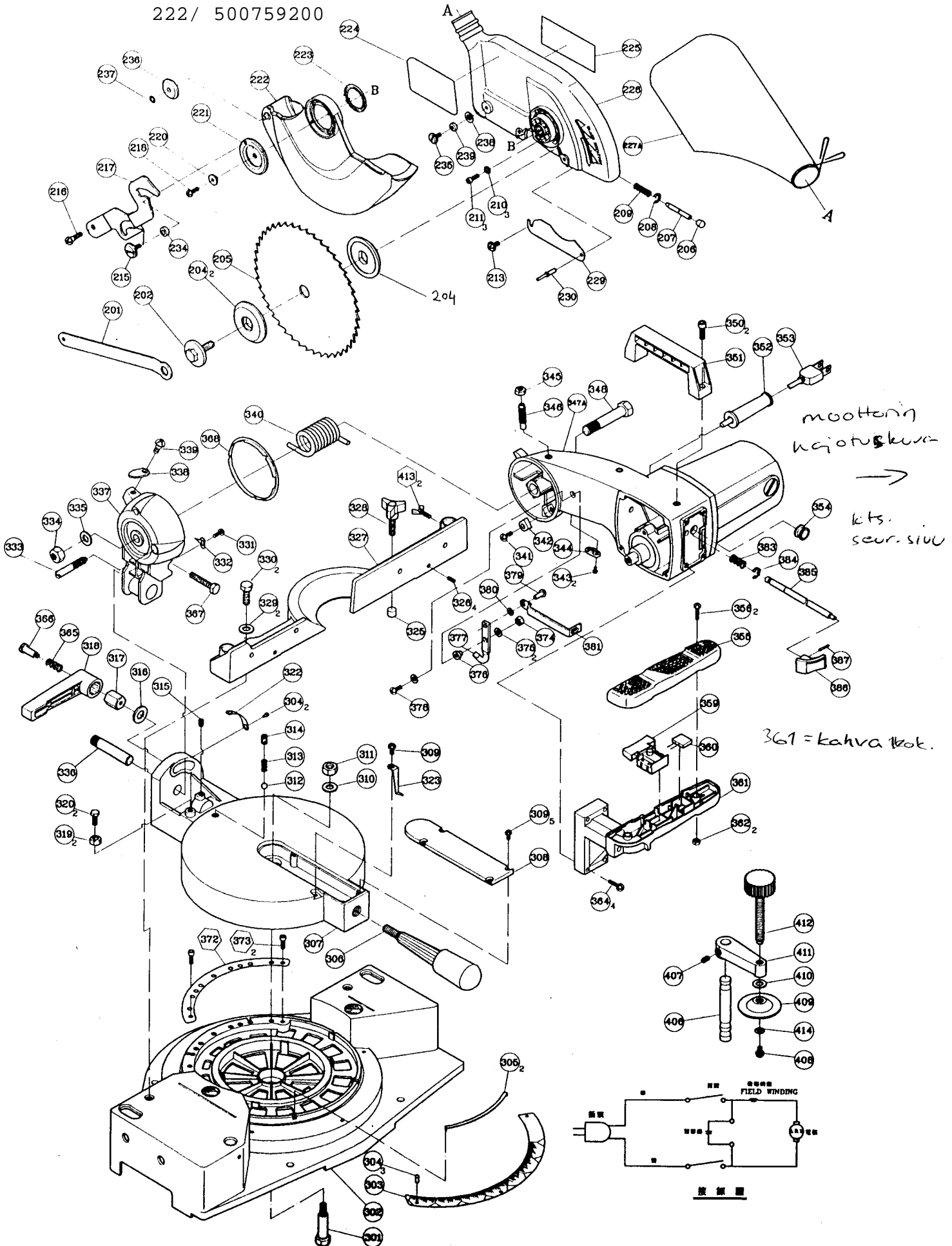


MS10RA

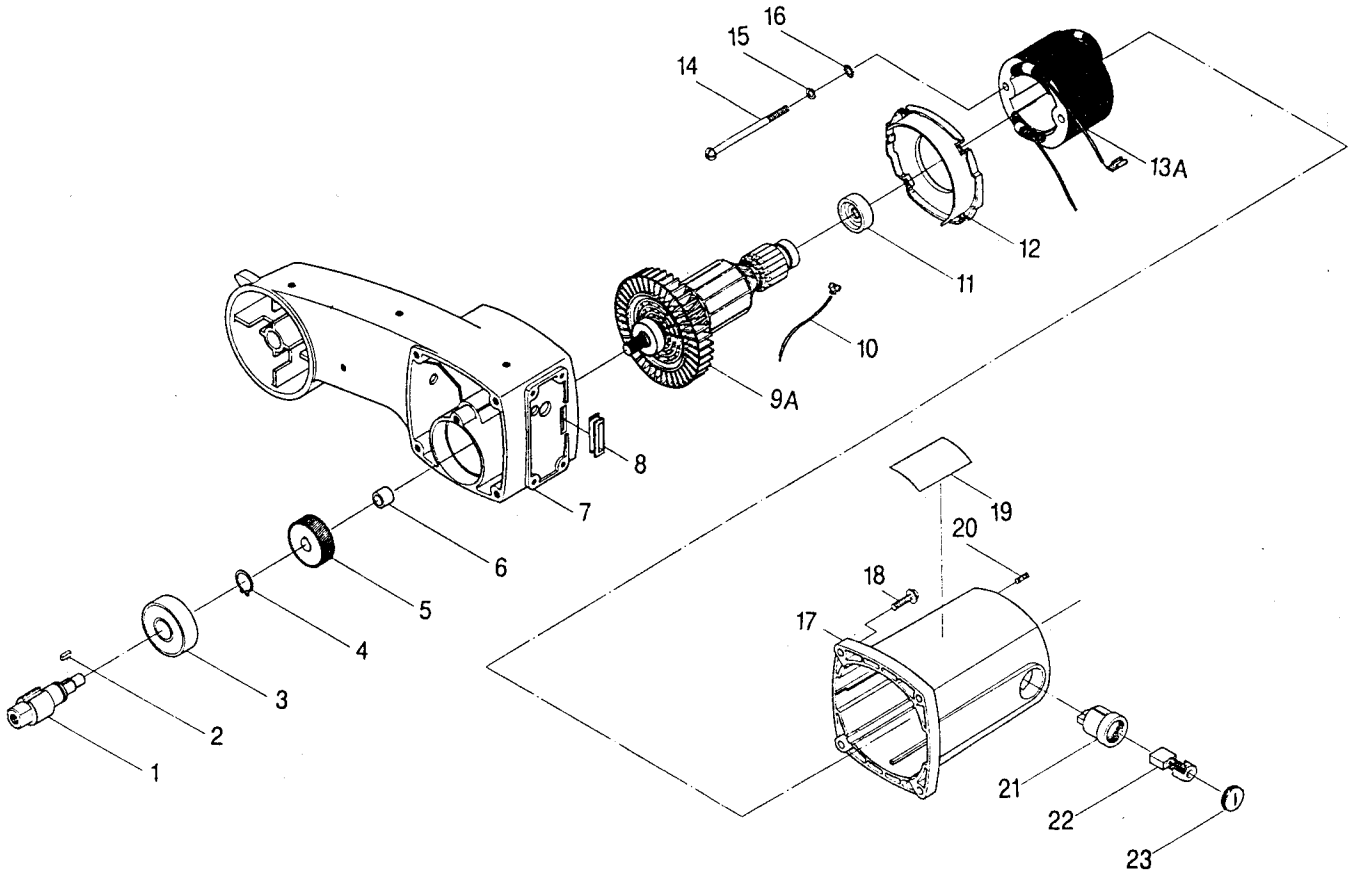
10" COMPOUND MITER SAW ASSEMBLY DRAWING

222/ 500759200



-MS10RA

MOTOR'S ASSEMBLY DRAWING



KOODI ESIM SCMSIORA-MOORA

MOTOR PARTS LIST

12-'94

CODE NO.	DESCRIPTION	Q'TY	PARTS NO.	DESCRIPTION	Q'TY
1	SHAFT-ARBOR	1	14	CR. RE. PAN HD. SCREW M5 × 0.8	2
2	PARALLEL KEY 4 × 4-12	1	15	SPRING WASHER #3/16"	2
3	BALL BEARING 6304LLB <i>LL6304-2Z</i>	1	16	EXT. TOOTH LOCK HASAER #5	2
4	C-RING A-20	1	17	MOTOR HOUSING	1
05	HELIX-GEAR	1	18	CR. RE. PAN HD. SCREW AND WASHER M5 × 0.8-25	4
06	NEEDLE BEARING HK-1210	1	19	MOTOR NAME PLATE	1
7	ARM-UPPER	1	20	HEX. SOC SET SCREW M5 × 0.8-12	2
8	WIRE PROTECTOR	1	21A	BRUSH HOLDER ASS'Y	2ST
M 09A	ARMATURE ASS'Y	1ST	022A	BRUSH ASS'Y	2ST
10	LEAD ASS'Y	1	23	BRUSH COVER	2
11	BEARING BUSHING	1			
12	FLOW GUIDE	1			
13A	FIELD ASS'Y	1ST			

PARTS LIST

MS10RA

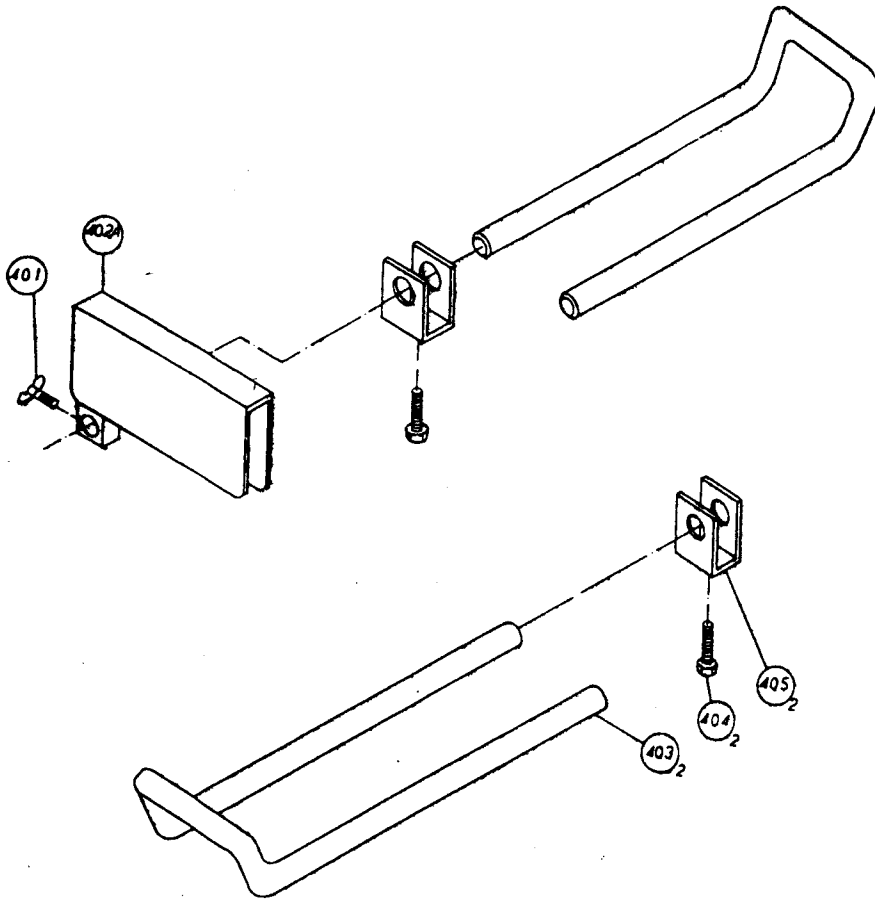
12-'94

CODE NO.	DESCRIPTION	Q'TY	PARTS NO.	DESCRIPTION	Q'TY
201	WRENCH HEX. L.	1	335	FLAT WASHER #16 x30-3	1
202	HEX WASFER HD BOLT M8 x1.25-20	1	336	SHAFT-PIVOT	1
203	WASHER	1	337	ANGLE PEGULATOR	1
204	ARBOR COLLAR	2	338	PLATE LOCK	1
205	BLADE <i>Art. 277403</i>	1	339	CR. RE. PAN HD. ROUND NECK SCREW M6 x1.0-12	1
206	CAP RUBBER	1	340	TORSION SPRING	1
207	BRACKET STOP	1	341	CR. RE. PAN HD. SCREW M5 x0.8-20	1
208	E-RING E-4	1	342	CUSHION	1
209	COMPRESSION SPRING	1	343	CR. RE. PAN HD. SCREW M4 x0.7-12	2
210	SPRING WASHER	3	344	CLAMP-CORD	1
211	HEX. -SOC. HD. CAP BOLT M5 x0.8-20	3	345	HEX. NUT M10 x1.5 T=8	1
213	CR. RE. ROUND WASHER HD. SCREW M6 x1.0-8	1	346	ADJUST SCREW M10 x1.5	1
215	CR. RE. COUNT HD. SCREW M6 x1.0-12	1	347	MOTOR	1
216	CR. RE. TRUSS HD. SCREW 1/4"-20UNC-1/2"	1	348	SPECIAL BOLT	1
217	LEVER	1	350	HEX. -SOC. HD. CAP BOLT M8 x1.25-20	2
218	CR. RE. PAN HD. SCREW M5 x0.8-12	1	351	SEGMENT HANDLE	1
219	FLAT WASHER 3/16 x3/4-1/16	1	352	GUARD-CORD	1
220	COLLAR	1	353	POWER CABLE	1
221	GUARD RETAINER	1	354	STRAIN RELIEF	1
222	PC-GUARD	1	355	MOTOR HANDLE COVER	1
223	SPRING GUARD	1	356	CR. RE. PAN HD. SCREW M4 x0.7-25	2
224	TRADE-MARK LABEL	1	359	TRIGGER SWITCH	1
226	BLADE GUARD	1	360	CAPACITOR	1
227A	BAG-DUST ASS'Y	1	361	MOTOR HANDLE	1
229	CUTTER SHAFT GUARD	1	362	HEX. NUT M4 x0.7 T=3.2	2
230	BLIND RIVET 3/16	1	364	CR. RE. PAN HD. SCREW & WASHER M5 x0.8-30	4
234	BALL BEARING	1	365	COMPRESSION SPRING	1
235	CR. RE. COUNT HD. SCREW M6 x1.0-20	1	366	SCREW	1
236	ROLLING WHEEL	1	367	HEX. HD. BOLT M10 x1.5-65	1
237	SELF-LOCKING RING CSTW-6	1	368	SLIDE PLATE	1
238	COLLAR	3	372	SET PLATE	1
301	CENTER SHAFT	1	373	HEX. -SOC. HD. CAP BOLT M5 x0.8-8	2
302	BASE	1	374	NUT CHUCK	1
303	TILTING SCALE	1	375	FLAT WASHER 3/16 x3/4-1/16	2
304	DRIVE SCREW #2.3-5	5	376	WASHER	1
305	ROTATION SLIDE PLATE	2	377	LOCKING LEVER	1
306	HANDLE BAR	1	378	CR. RE. PAN HD. SCREW M5 x0.8-20	1
307	TABLE	1	379	RIVET 6-10	1
308	TABLE INSERT	1	380	FLAT WASHER 6 x13-1	1
309	CR. RE. PAN HD. SCREW M4 x0.7-8	5	381	LINK BAR	1
310	FLAT WASHER #8 x16-2.5	1	383	COMPRESSION SPRING	1
311	NUT CHUCK M8 x1.25 T=8	1	384	E-RING E6	1
312	STEEL BALL	1	385	PUSHING ROD	1
313	COMPRESSION SPRING	1	386	PUSH BUTTON	1
314	HEX. SOC. SET SCREW M10 x1.5-12	1	387	SPRING PIN 3 x14	1
315	HEX. SOC. SET SCREW M6 x1.0-12	1	406	SUPPORT	1
316	FLAT WASHER 3/8 x29/32-1/8	1	407	HEX. SOC. SET SCREW M6 x1.0-8	1
317	HANDLE COLLAR	1	408	CR. RE. PAN HD. SCREW & WASHER M5 x0.8-12	1
318	CLAMP HANDLE	1	409	FLANGE	1
319	HEX. NUT M6 x1.0 T=5	2	410	FLAT WASHER 10 x19-1.8	1
320	HEX. HD. BOLT M6 x1.0-25	2	411	WISE BEARING	1
322	BRACKET-TILT	1	412	HANDLE BAR	1
323	TILT POINTER	1	413	WING BOLT M5 x0.8-20	2
325	BRACKET STOP	1	414	FLAT WASHER 3/16 x1/2-3/64	1
326	HEX. SOC. SET SCREW M5 x0.8-10	4			
327	FENCE	1			
328	LOCK KNOB	1			
329	FLAT WASHER 10 x19-1.8	2			
330	HEX. HD. BOLT M10 x1.5-35	2			
331	CR. RE. PAN HD. SCREW M4 x0.7-6	1			
332	NEEDLE POINTER	1			
333	SCREW STOP	1			
334	NUT CHUCK M16 x20 T=16	1			

*Wiliam.
0227
SC 444 - MS10RA*

MS10RA

OPTIONAL ACCESSORY ASSEMBLY DRAWING



OPTIONAL ACCESSORY ASSEMBLY PARTS LIST

CODE NO.	DESCRIPTION	SIZE	Q'TY
401	WING BOLT	1/4" X 20UNC - 1/2	1
402A	STOCK STOP ASS'Y		1
403	EXTENSION WING		2
404	HEX. BOLT	1/4" X 20UNC - 5/8"	2
405	U BRACKET		2