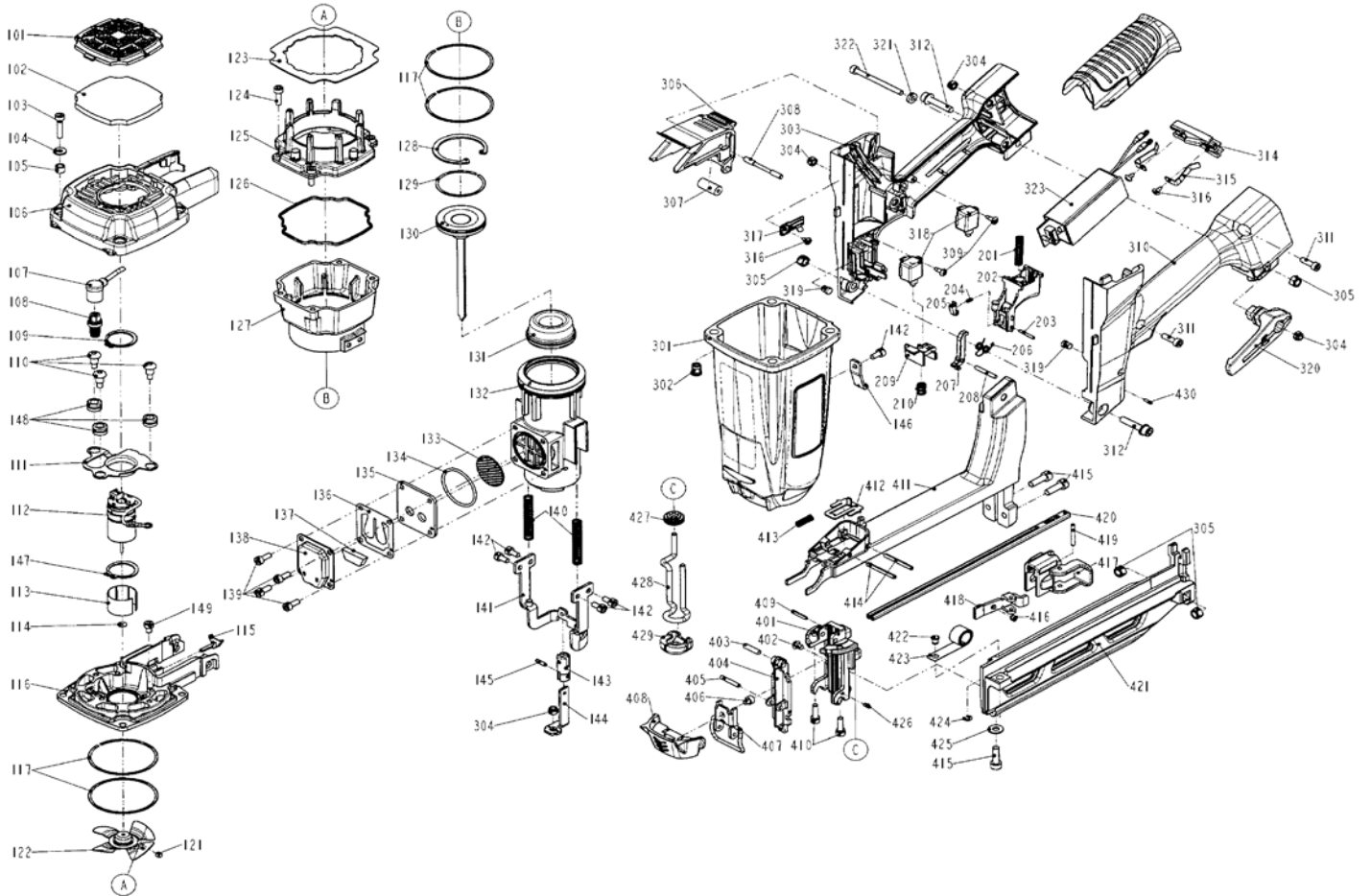


DIAGRAM OF BEX B16/64-N5



ITEM NO.	PART NO.	DESCRIPTION	ITEM NO.	PART NO.	DESCRIPTION	ITEM NO.	PART NO.	DESCRIPTION
101	11371-0084705-1	DEFLECTOR	140	11337-0084704-1	SAFETY SPRING	318	1121D-0080001-1	PCB CABLE SET
102	1137N-0084701-1	FILTER	141	11257-0084712-1	SAFETY C UNIT	319	113AP-1150001-1	LED COVER
103	20110420C12	HEX.SOC.HD.BOLT	142	2040101-02030-2	HEX.SOC.HD.BOLT	320	1133D-1044701-1	SPRING RETAINER
104	2123102	FLAT WASHER	143	1137G-0084702-1	LINK ROD	321	2040201-02070-0	FLAT WASHER
105	1136P-0084701-1	COLLAR	144	11332-0084706-1	SAFETY B	322	2040101-02251-0	HEX.SOC.HD.BOLT
106	11369-0084703-1	CAP	145	2040401-04050-0	SPIRAL PINS	323	1120G-0080003-1	PCB ASSEMBLY
107	11216-0080001-1	HIGH VOLTAGE CABLE SET	146	113AH-0084702-1	MOTOR FAN SWITCH LEVER	401	11303-0084723-1	DRIVER GUIDE
108	1120D-0084701-1	SPARKLER UNIT	147	2040301-25010-0	S - RING	402	2040102-02060-0	HALF ROUND HD.HEX.BOLT
109	2040301-17010-0	S - RING	148	1134W-0084701-1	FEED BUMPER	403	2040403-06080-0	PIN
110	1131R-0084701-1	SCREW	149	2040101-02020-5	HEX.SOC.HD.BOLT	404	11352-0084715-1	DRIVER GUIDE COVER A
111	11323-0084714-1	FAN MOTOR BRACKET	201	11319-0084701-1	SPRING	405	246212	SPRING PIN
112	1120N-0080002-1	MOTOR UNIT	202	11316-1394701-1	TRIGGER	406	20110404C12	HEX.SOC.HD.BOLT
113	11398-1150002-1	SLEEVE MOTOR	203	2040403-03080-0	PIN	407	11244-0084702-1	LOCK HANDLE UNIT
114	11380-1150001-1	WASHER-MOTOR SHAFT	204	1138J-0394701-1	GUIDE LOCATING SPRING	408	1137A-0084706-1	COVER-SAFETY
115	113A6-1153901-1	FUEL STEM ADAPTER	205	11305-1394701-1	STOPPER	409	246142	SPRING PIN
116	1139U-0080003-1	END CAP-COMBUSTION CH	206	11315-0080001-1	SPRING	410	2040100-02090-2	BOLT ASSY
117	11350-0084701-1	PISTON RING-CYLINDER	207	11335-1394702-1	SAFETY	411	11391-0084714-1	MAGAZINE UNIT B
121	2040104-02010-2	HEX.SOC.HD.SCREW	208	2040403-05110-0	PIN	412	1136Y-0084701-1	BRACKET
122	1120C-0080001-1	COOLING FAN ASSEMBLY	209	1137F-0084701-1	LINK-BLOCK	413	1133C-0814701-1	STOPPER FINGER SPRING
123	1133X-0084705-1	SPACER	210	1137T-0084701-1	SPRING	414	3304300000	SPRING PIN
124	2040101-02070-2	HEX.SOC.HD.BOLT	301	11384-0083801-1	GUN BODY	415	20110516C12	HEX.SOC.HD.BOLT
125	113AE-0080001-2	UPPER COMBUSTION CHAMBER	302	11398-0080008-1	CAP NUT	416	1138H-0460003-1	PUSHER SPRING
126	1132M-0084704-1	PACKING	303	1137K-0084703-1	HANDLE A	417	1136E-0084706-1	PROTECTING HOOD COVER
127	1139V-0080001-1	COMBUSTION CHAMBER	304	2040500-02020-0	LOCK NUT	418	11363-0084719-1	PUSHER
128	2040300-06010-0	C - RING	305	2040500-03010-0	LOCK NUT	419	246332	SPRING PIN
129	11350-0084702-1	PISTON RING	306	113A7-0084701-1	FUEL ACTUATOR	420	11396-0084706-1	STEEL CHANNEL
130	11204-0080062-1	DRIVER UNIT	307	11398-1154701-1	BUSH-FUEL ACTUATOR	421	11273-0084704-1	MAGAZINE UNIT
131	11327-0084703-1	BUMPER	308	11325-1154702-1	PIN-FUEL ACTUATOR	422	100844201	BRACKET
132	11320-0080020-1	CYLINDER	309	2040107-01120-0	TAP BOLT	423	100741201	SPRING
133	1139W-0460001-1	EXHAUST MESH PLATE	310	1137K-0084704-1	HANDLE B	424	226106	E - RING
134	2041102-04041-0	O - RING	311	20110414C12	HEX.SOC.HD.BOLT	425	2040201-03020-0	FLAT WASHER
135	113A0-0080001-1	EXHAUST BAFFLE	312	2040100-03130-0	BOLT W/FLAT WASHER	426	246152	SPRING PIN
136	1139X-0080001-1	REED VALVE	314	1136H-1154701-1	BATTERY NODE BRACKET	427	2023771C00	ADJUST AXIE
137	1139L-0080002-1	CLEANER B	315	113A8-1150001-1	BATTERY NODE	428	11331-0084713-1	SAFETY A
138	113A3-0080001-1	DEFLECTOR	316	2040107-01040-0	TAP BOLT	429	11339-0084706-1	PROTECTIVE CASING
139	2040101-02040-2	HEX.SOC.HD.BOLT	317	11323-0464704-1	WIRE HARNESS PLATE	430	246172	SPRING PIN