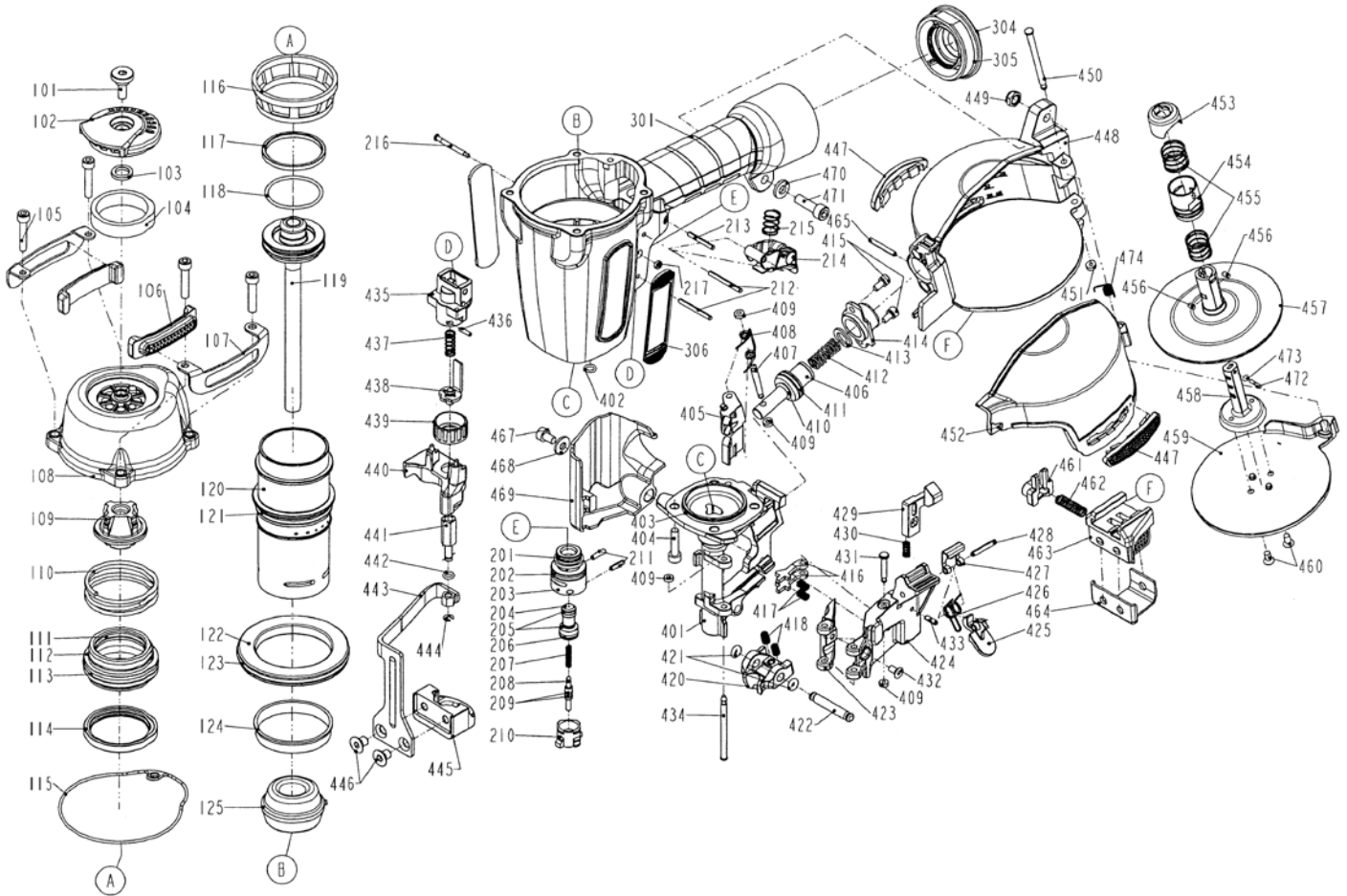


DIAGRAM OF BEX C31/45-F1



ITEM NO.	PART NO.	DESCRIPTION	ITEM NO.	PART NO.	DESCRIPTION	ITEM NO.	PART NO.	DESCRIPTION
101	1137V-0464701-1	DEFLECTOR BOLT(3M2353)	216	2024050A00	TRIGGER PIVOT PIN	436	246162	SPRING PIN
102	11371-0254702-1	DEFLECTOR	217	104620201	URETHANE RETAINER	437	100844101	SAFETY SPRING
103	1135G-0464701-1	RUBBER PAD	301	11230-0257102-1	GUN BODY UNIT	438	11256-0764702-2	SAFETY B UNIT
104	1132T-0460001-1	MUFFLER	304	100830305-43	END CAP	439	11393-0767802-1	ADJUST AXIE
105	20110525C12	HEX.SOC.HD.BOLT	305	2152117	O - RING	440	1137A-0254702-1	SAFETY COVER
106	1135R-0254706-1	PROTECTIVE CUSHION	308	1135V-0000039-1	AIR PLUG	441	11393-0254705-1	ADJUST ROD
107	11397-0254712-2	GUIDE COVER	401	11382-0254709-1	NOSE PIECE	442	3200260000	O - RING
108	11369-0254304-1	CAP	402	2152091	O - RING	443	11330-0254704-1	SAFETY
109	11370-0250005-1	SEAL	403	2152001	O - RING	444	226106	E - RING
110	11360-0460001-3	COMPRESSION SPRING	404	2040101-03090-2	HEX.SOC.HD.BOLT	445	11254-0254701-2	SAFETY A UNIT
111	2041104-04070-0	O - RING	405	11306-0254704-1	FEED FINGER	446	2040103-04070-3	COUNTER SUNK SCREW
112	11368-0460006-1	HD.VALVE PISTON	406	11364-0254704-1	FEED PISTON	447	11353-0254705-1	MAGAZINE PROTECTIVE CUSHION
113	2152101	O - RING	407	106640201	PIN FEED PISTON	448	11354-0254704-1	MAGAZINE CASE
114	11399-0460002-1	COLLAR	408	11307-0250001-1	FEED FINGER SPRING	449	2501062	LOCK NUT
115	1132M-0254705-1	PACKING	409	2021610000	PU RETAINER	450	1136R-0864701-1	MAGAZINE SHAFT PIN
116	1131E-0080001-2	CYLINDER PRESS RING	410	2041109-01050-0	O - RING	451	1135H-0860001-1	PU RETAINER
117	11350-0460601-1	PISTON RING	411	2041105-02060-0	O - RING	452	11355-0254704-1	MAGAZINE COVER
118	2041102-04040-0	O - RING	412	1133F-0250002-1	FEED PISTON SPRING	453	1136H-0254702-1	FIXED SUPPORT
119	11204-0250021-2	DRIVER UNIT	413	1134W-0250003-1	FEED-BUMPER	454	11357-0254703-1	MAGAING POST
120	11320-0252401-1	CYLINDER	414	11366-0254705-1	FEED PISTON CAP	455	1137T-0254702-1	SPRING
121	2041100-05050-0	O - RING	415	2040100-02040-2	BOLT ASSY	456	2040403-05020-0	PIN
122	11321-0460001-1	CYLINDER SPACER	416	11358-0254703-1	NAIL STOP	457	1132Y-0254702-1	NAIL BRACKET
123	2041104-07030-0	O - RING	417	1130D-0250001-1	SPRING	458	11393-0254704-1	ADJUST ROD
124	102511501	CYLINDER RING	418	1138J-0250001-1	GUIDE BLOCK SPRING	459	11356-0254702-1	SPACER
125	11327-0084702-1	BUMPER	420	1135D-0254705-1	GUIDE BLOCK	460	25610408C13	TAP BOLT
201	2152118	O - RING	421	2041104-01040-0	O - RING	461	1131J-0254702-1	POSITIONING SHEET
202	3201250000	O - RING	422	11324-0254702-1	FIXED PIN	462	102542701	SAFETY SPRING
203	100820601	PLUNGER CAP	423	1135D-0254706-1	GUIDE BLOCK	463	11312-0254707-1	ADJUSTING PLATE-A
204	102520601	VALVE PLUNGER	424	11361-0254709-1	DOOR	464	11312-0254706-1	ADJUSTING PLATE-B
205	2152058	O - RING	425	11310-0254704-1	DOOR LATCH	465	246192	SPRING PIN
206	2152016	O - RING	426	11311-0254706-1	LATCH SPRING	467	2040101-03030-2	HEX.SOC.HD.BOLT
207	102520801	SPRING	427	11323-0254701-1	POSITIONING SHEET	468	2123052	FLAT WASHER
208	100820301	PLUNGER	428	2040401-05100-0	SPIRAL PINS	469	1134C-0254702-1	SAFETY COVER
209	2152060	O - RING	429	11305-0254701-1	STOPPER	470	2121063-1	FLAT WASHER
210	100820201	TRIGGER VALVE HEAD	430	1133C-0784701-1	STOPPER FINGER SPRING	471	20110620C12	HEX.SOC.HD.BOLT
211	246202	SPRING PIN	431	11324-0084701-1	FIXED PIN	472	11325-0254703-1	PIN
212	3304300000	SPRING PIN	432	20710408C12	COUNTER SUNK SCREW	473	2041104-01050-0	O - RING
213	2040400-05120-0	SPRING PIN	433	2040401-05050-0	SPIRAL PINS	474	11315-0254702-1	SPRING
214	11224-0764701-1	TRIGGER UNIT	434	11362-0814701-1	DOOR SHAFT PIN			
215	11376-0370001-1	SPRING	435	11338-0254706-1	SAFETY GUIDE			