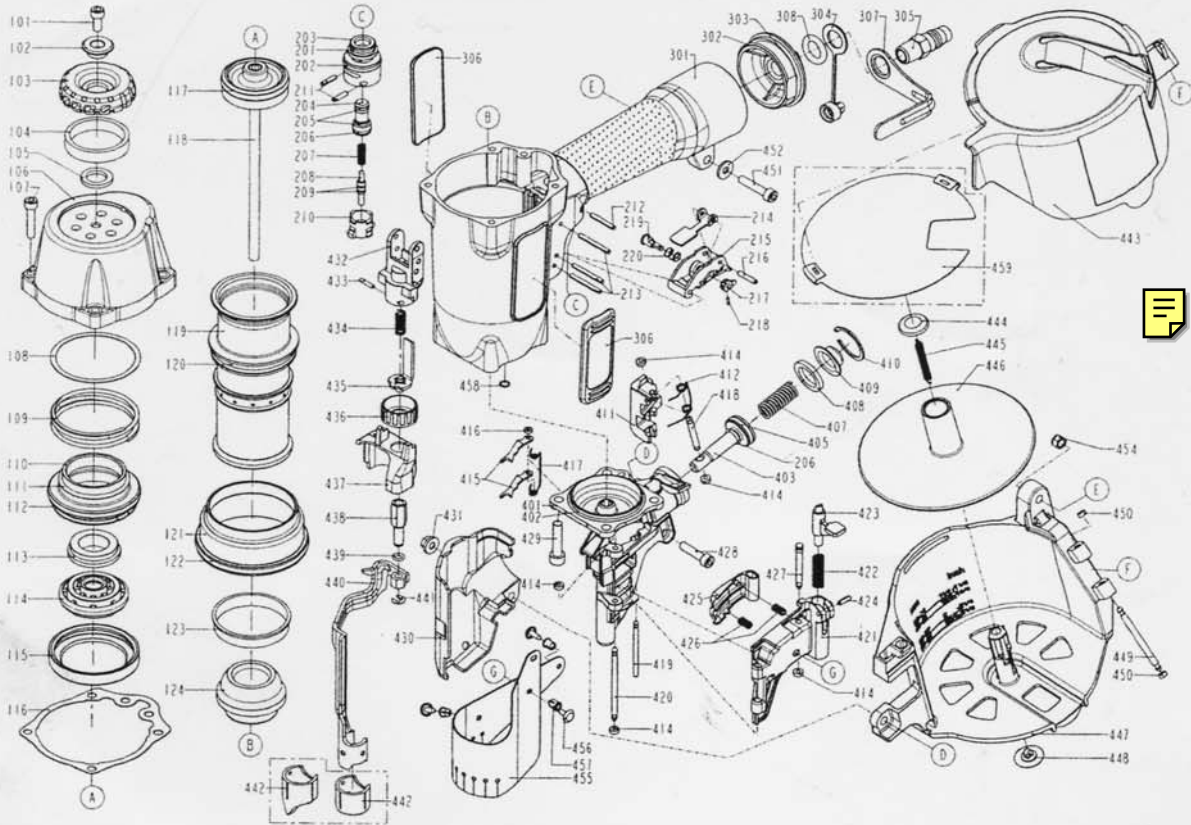


# DIAGRAM OF MODEL NO. C31/65-B1



ITEM NO.	PART NO.	DESCRIPTION	ITEM NO.	PART NO.	DESCRIPTION	ITEM NO.	PART NO.	DESCRIPTION
101	2040101-03050-2	HEX.SOC.HD.BOLT	214	11317-0784701-1	SECONDARY TRIGGER	425	11358-0764703-1	NAIL STOP
102	11381-0464701-1	WASHER	215	11316-0784701-1	TRIGGER	426	1133C-0784701-1	STOPPER FINGER SPRING
103	11371-0784701-1	DEFLECTOR	216	2040400-05080-0	SPRING PIN	427	11359-0764702-1	PIN-NAIL STOP
104	11321-0780001-1	MUFFLER	217	11386-0784701-1	ROLLING ELEMENT	428	2040101-03100-0	HEX.SOC.HD.BOLT
105	1135G-0460001-1	RUBBER PAD	218	2040400-02030-0	SPRING PIN	429	2040101-04090-2	HEX.SOC.HD.BOLT
106	11369-0764801-1	CAP	219	11393-0784703-1	ADJUST ROD	430	1134C-0764703-1	SAFETY COVER
107	2040101-03110-0	HEX.SOC.HD.BOLT	220	1137T-0784701-1	SPRING	431	2040501-03040-0	BOLT CAP
108	11381-0760001-1	WASHER	301	11230-0764601-1	GUN BODY UNIT	432	11338-0764701-1	SAFETY GUIDE
109	11360-0760002-1	COMPRESSION SPRING	302	11346-0084303-1	END CAP	433	2040400-04060-0	SPRING PIN
110	11368-0760002-1	HD.VALVE PISTON	303	2041109-05050-0	O - RING	434	11337-0084701-1	SAFETY SPRING
111	2041104-05050-0	O - RING	304	1132L-0014701-1	DUSTY COVER	435	11352-0764702-1	SAFETY B
112	2041101-06020-0	O - RING	305	1135V-0000001-1	AIR PLUG	436	11393-0761101-1	ADJUST AXIE
113	1133M-0760001-1	SEAL GASKET	306	1135R-0764701-1	PROTECTIVE CUSHION	437	1137A-0764701-1	COVER-SAFETY
114	11370-0760002-1	SEAL	307	1133D-0784702-1	SPRING RETAINER	438	11393-0764701-1	ADJUST ROD
115	11399-0760003-1	COLLAR	308	2041107-02010-0	O-RING	439	2041102-01050-0	O - RING
116	1132M-0764701-1	PACKING	401	11382-0764702-1	NOSE PIECE	440	11331-0764703-1	SAFETY A
117	2041104-04102-0	O - RING	402	2041104-05020-0	O - RING	441	2040302-24010-0	E - RING
118	11204-0760006-1	DRIVER UNIT	403	11364-0764702-1	FEED PISTON	442	11339-0764702-1	PROTECTIVE CASING
119	11320-0760003-1	CYLINDER	404	2041109-01050-0	O - RING	442	11339-0764703-1	PROTECTIVE CASING
120	2041108-05040-0	O - RING	405	2041100-02040-0	O - RING	443	11355-0760001-1	MAGAZINE COVER
121	11321-0760002-1	CYLINDER SPACER	407	1133J-0524701-1	SPRING A COMPRESSION	444	1134N-0250002-1	SPRING BASE A
122	2041108-07020-0	O - RING	408	1134W-0810001-1	FEED BUMPER	445	11328-0764701-1	PULL SPRING
123	11322-0250001-1	CYLINDER RING	409	11366-0814701-1	FEED PISTON CAP	446	11356-0784702-1	SPACER
124	11327-0764702-1	BUMPER	410	2040300-01010-0	C - RING	447	11354-0764702-1	MAGAZINE CASE
201	2041104-02020-0	O - RING	411	11306-0764702-1	FEED FINGER	448	1134M-0250002-1	SPRING BASE
202	2041104-02030-0	O - RING	412	11307-0780001-1	FEED FINGER SPRING	449	11362-0784702-1	DOOR SHAFT PIN
203	11374-0084701-1	PLUNGER CAP	414	1135H-0790001-1	PU RETAINER	450	1135H-0250001-1	SHAFT RING
204	1133S-0250001-1	VALVE PLUNGER	415	1130G-0764701-1	FIRST STOPPER FINGER	451	2040101-03161-0	HEX.SOC.HD.BOLT
205	2041100-01070-0	O - RING	416	1131D-0460001-1	URETHANE RETAINER	452	2040202-03010-0	FLAT WASHER
206	2041100-01030-0	O - RING	417	1130H-0764701-1	SPRING	454	2040500-03020-0	LOCK NUT
207	11376-0254701-1	SPRING	418	11365-0664701-1	PIN FEED PISTON	455	11383-0760002-1	MUZZLE PROTECTOR
208	11375-0780001-1	PLUNGER	419	11359-0764701-1	PIN-NAIL STOP	456	11324-0254701-1	FIXED PIN
209	2041102-01030-0	O - RING	420	11362-0764702-1	DOOR SHAFT PIN	457	1131G-0254701-1	FIXED RING
210	11373-0084701-1	TRIGGER VALVE HEAD	421	11361-0764702-1	DOOR	458	2041109-01060-0	O - RING
211	2040400-05060-0	SPRING PIN	422	11311-0794701-1	LATCH SPRING	459	1137E-0760001-1	FIX-PLATE
212	2040400-05110-0	SPRING PIN	423	11310-0794701-1	DOOR LATCH			
213	2040400-05160-0	SPRING PIN	424	2040400-05050-0	SPRING PIN			

\*(221 / 501282961Liipasin

**PRICE LIST FOR SPARE PARTS OF C31/65-B1**

ITEM	PARTS NO	PARTS NAME	ITEM	PARTS NO	PARTS NAME	ITEM	PARTS NO	PARTS NAME
101	3002040200	HEX.SOC.HD.BOLT	211	246202	SPRING PIN	426	1133C-0784701-1	STOPPER FINGER SPRING
102	104611401	WASHER	212	246332	SPRING PIN	427	11359-0764702-1	PIN-NAIL STOP
103	11371-0784701-1	DEFLECTOR	213	3304300000	SPRING PIN	428	20110522C12	HEX.SOC.HD.BOLT
104	1132T-0780001-1	MUFFLER	221	11224-0764701-1 (*)	TRIGGER UNIT	429	2040101-04090-2	HEX.SOC.HD.BOLT
105	104611701	RUBBER PAD	222	11376-0370001-1	SPRING	430	1134C-0764703-1	SAFETY COVER
106	11369-0764304-1	CAP	301	11230-0767101-1	GUN BODY UNIT	431	2040501-03040-0	BOLT CAP
107	20110525C12	HEX.SOC.HD.BOLT	302	100830305-43	END CAP	432	11338-0764701-1	SAFETY GUIDE
108	11381-0760001-1	WASHER	303	2152117	O - RING	433	246162	SPRING PIN
109	11360-0760002-1	COMPRESSION SPRING	304	2027810047	DUSTY COVER	434	100844101	SAFETY SPRING
110	11368-0760002-1	HD.VALVE PISTON	305	2303021	AIR PLUG	435	11256-0764702-2	SAFETY B UNIT
111	2041104-05050-0	O - RING	306	1135R-0764701-1	PROTECTIVE CUSHION	436	11393-0761101-1	ADJUST AXIE
112	2041101-06020-0	O - RING	401	11382-0764702-1	NOSE PIECE	437	1137A-0764701-1	COVER-SAFETY
113	1133M-0760001-1	SEAL GASKET	402	3204240000	O - RING	438	11393-0764701-1	ADJUST ROD
114	11370-0760002-1	SEAL	403	11364-0764702-1	FEED PISTON	439	3200260000	O - RING
115	11399-0760003-1	COLLAR	404	2041109-01050-0	O - RING	440	11331-0764703-1	SAFETY A
116	1132M-0764701-1	PACKING	405	2152049	O - RING	441	226110	E - RING
117	2041107-05010-0	O-RING	407	105240601	SPRING A COMPERSSION	442	11339-0764702-1	PROTECTIVE CASING
118	11204-0760009-1	DRIVER UNIT	408	1134W-0810001-1	FEED BUMPER	443	11355-0760001-1	MAGAZINE COVER
119	11320-0760004-1	CYLINDER	409	11366-0814701-1	FEED PISTON CAP	444	102547102	SPRING BASE A
120	3204200000	O - RING	410	227203	C - RING	445	2027230A00	PULL SPRING
121	11321-0760002-1	CYLINDER SPACER	411	11306-0764702-1	FEED FINGER	446	11356-0784702-1	SPACER
122	3206110000	O - RING	412	11307-0780001-1	FEED FINGER SPRING	447	11354-0764702-1	MAGAZINE CASE
123	11322-0764701-1	CYLINDER RING	414	2021610000	PU RETAINER	448	102546302	SPRING BASE
124	11327-0764702-1	BUMPER	415	1130G-0764701-1	FIRST STOPPER FINGER	449	11362-0784702-1	DOOR SHAFT PIN
201	2152118	O - RING	416	104620201	URETHANE RETAINER	450	102540901	SHAFT RING
202	3201250000	O - RING	417	1130H-0764701-1	SPRING	451	20110525C22	HEX.SOC.HD.BOLT
203	100820601	PLUNGER CAP	418	106640201	PIN FEED PISTON	452	2123052	FLAT WASHER
204	102520601	VALVE PLUNGER	419	11359-0764701-1	PIN-NAIL STOP	454	2501052	LOCK NUT
205	2152058	O - RING	420	11362-0764702-1	DOOR SHAFT PIN	455	11383-0760002-1	MUZZLE PROTECTOR
206	2152016	O - RING	421	11361-0764702-1	DOOR	456	2020690047	FIXED PIN
207	102520801	SPRING	422	2018680A00	LATCH SPRING	457	2020700047	FIXED RING
208	100820301	PLUNGER	423	2021620D00	DOOR LATCH	458	2041109-01060-0	O - RING
209	2152060	O - RING	424	246322	SPRING PIN	460	2152069	O - RING
210	100820201	TRIGGER VALVE HEAD	425	11358-0764703-1	NAIL STOP			