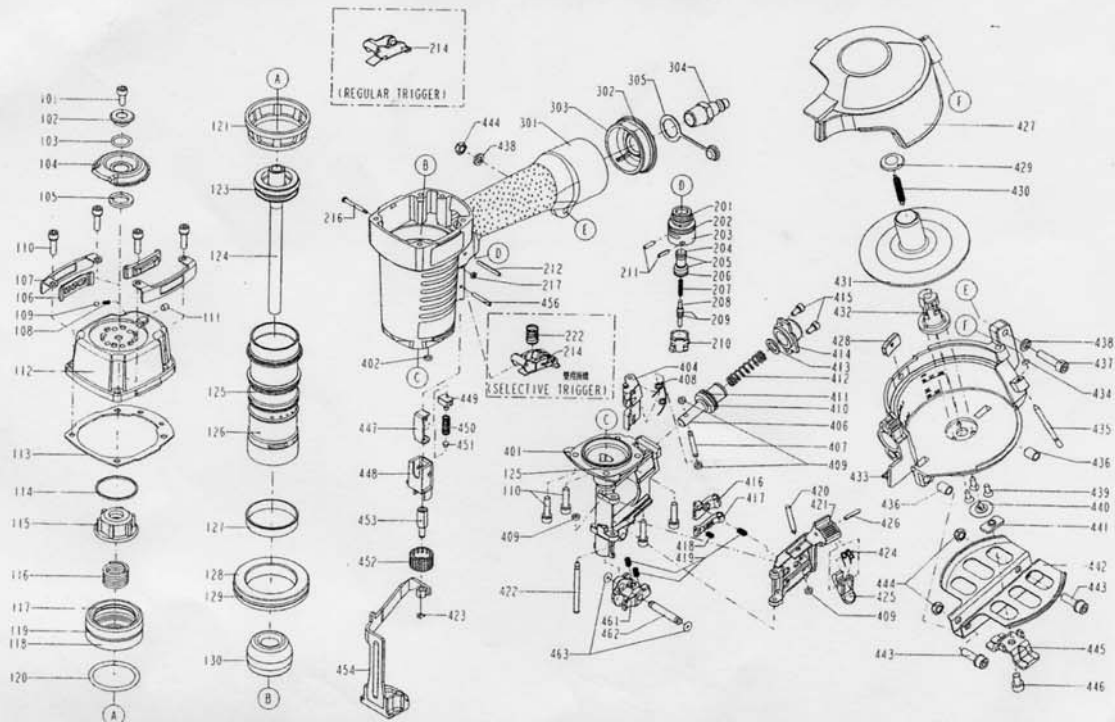


DIAGRAM OF MODEL NO. BEX C31/45-A1



PARTS LIST FOR C31/45-A1

| ITEM NO. | PART NO. | DESCRIPTION | ITEM NO. | PART NO. | DESCRIPTION | ITEM NO. | PART NO. | DESCRIPTION |
|----------|-----------------|---------------------|----------|-----------------|-----------------------|----------|-----------------|----------------------|
| 101 | 3002040200 | HEX. SOC. HD. BOLT | 207 | 102520801 | SPRING | 424 | 11311-0254704-1 | LATCH SPRING |
| 102 | 104611401 | WASHER | 208 | 100820301 | PLUNGER | 425 | 102541602 | DOOR LATCH |
| 103 | 2152002 | O - RING | 209 | 2152060 | O - RING | 426 | 246532 | SPRING PIN |
| 104 | 11371-0080701-1 | DEFLECTOR | 210 | 100820201 | TRIGGER VALVE HEAD | 427 | 11355-0254701-2 | MAGAZINE COVER |
| 105 | 104611701 | RUBBER PAD | 211 | 246202 | SPRING PIN | 428 | 102546002 | PROTECTION UNIT |
| 106 | 102512601 | PROTECTIVE CUSHION | 212 | 2040400-05150-0 | SPRING PIN | 429 | 1134N-0254701-1 | SPRING BASE A |
| 107 | 102512704 | GUIDE COVER | 214 | 11224-0834701-1 | TRIGGER UNIT | 430 | 102546401 | PULL SPRING |
| 108 | 104611801 | POSITIONING SPRING | 216 | 100820401 | TRIGGER PIVOT PIN | 431 | 11356-0250001-2 | SPACER |
| 109 | 2161041 | BALL | 217 | 104620201 | URETHANE RETAINER | 432 | 102544902 | ADJUST POST |
| 110 | 201105201A | BOLT ASSY | 222 | 11376-0370001-1 | SPRING | 433 | 11354-0254701-1 | MAGAZINE CASE |
| 111 | 20810505C12 | HEX. SOC. HD. SCREW | 301 | 11230-0254203-1 | GUN BODY UNIT | 434 | 2152017 | O - RING |
| 112 | 11369-0084303-2 | CAP | 302 | 2152117 | O - RING | 435 | 102545102 | PIN |
| 113 | 11302-0080001-2 | CYLINDER CAP SEAL | 303 | 100830305-43 | END CAP | 436 | 102544702 | LATCH SPRING BUSHING |
| 114 | 100810701 | SEAL GASKET | 304 | 2303021 | AIR PLUG | 437 | 20110625C12 | HEX. SOC. HD. BOLT |
| 115 | 100810501 | SEAL | 305 | 2027810047 | DUSTY COVER | 438 | 2123053 | FLAT WASHER |
| 116 | 100810801 | COMPRESSION SPRING | 401 | 11382-0254704-1 | NOSE PIECE | 439 | 25610408C13 | TAP BOLT |
| 117 | 2152113 | O - RING | 402 | 3200260000 | O - RING | 440 | 102546302 | SPRING BASE |
| 118 | 100810902 | HD. VALVE PISTON | 404 | 11306-0254704-1 | FEED FINGER | 441 | 102544102 | ADJUSTING UNT |
| 119 | 2152112 | O - RING | 406 | 11364-0254704-1 | FEED PISTON | 442 | 1132U-0254703-1 | MAGAZING GUARD |
| 120 | 2152053 | O - RING | 407 | 106640201 | PIN FEED PISTON | 443 | 201106201A | BOLT ASSY |
| 121 | 100811401 | CYLINDER PRESS RING | 408 | 11307-0250001-1 | FEED FINGER SPRING | 444 | 2501062 | LOCK NUT |
| 123 | 2041104-04043-0 | O - RING | 409 | 2021610000 | PU RETAINER | 445 | 102543805 | ADJUSTING PLATE |
| 124 | 11204-0250016-1 | DRIVER UNIT | 410 | 2041109-01050-0 | O - RING | 446 | 20110610C12 | HEX. SOC. HD. BOLT |
| 125 | 2152001 | O - RING | 411 | 2041105-02060-0 | O - RING | 447 | 11332-0254703-1 | SAFETY B |
| 126 | 11320-0250006-2 | CYLINDER | 412 | 1133F-0250002-1 | FEED PISTON SPRING | 448 | 11338-0254703-1 | SAFETY GUIDE |
| 127 | 100811501 | CYLINDER RING | 413 | 1134W-0250003-1 | FEED BUMPER | 449 | 1136M-0250001-1 | SAFETY STOPPER |
| 128 | 100812301 | CYLINDER SPACER | 414 | 11366-0254703-1 | FEED PISTON CAP | 450 | 11337-0784701-1 | SAFETY SPRING |
| 129 | 2152116 | O - RING | 415 | 201104081A | BOLT ASSY | 451 | 1134W-0254701-1 | FEED BUMPER |
| 130 | 100812401 | BUMPER | 416 | 1130G-0254702-1 | FIRST STOPPER FINGER | 452 | 1137H-0254701-1 | ADJUST AXIE |
| 201 | 2152118 | O - RING | 417 | 1130C-0254701-1 | SECOND STOPPER FINGER | 453 | 11393-0254701-1 | ADJUST ROD |
| 202 | 3201250000 | O - RING | 418 | 1130D-0250001-1 | SPRING | 454 | 11257-0254701-1 | SAFETY UNIT |
| 203 | 100820601 | PLUNGER CAP | 419 | 1133C-0784701-1 | STOPPER FINGER SPRING | 456 | 246332 | SPRING PIN |
| 204 | 102520601 | VALVE PLUNGER | 420 | 11359-0784702-1 | PIN-NAIL STOP | 461 | 1135D-0254702-1 | GUIDE BLOCK |
| 205 | 2152058 | O - RING | 421 | 11361-0254704-1 | DOOR | 462 | 11324-0254702-1 | FIXED PIN |
| 206 | 2152016 | O - RING | 422 | 11362-0814701-1 | DOOR SHAFT PIN | 463 | 2041104-01040-0 | O - RING |
| | | | 423 | 226106 | E - RING | | | |